

THE NEW "WAS AND NOW" STRAUBE COMPANY BUYS BUILDING

A Song Somewhat Reminiscent of Past Convention Times, with the Moral by Which Compensation May Follow Convivial Reforms

In days of old, when bars were bold,
And all the world was living,
We'd pass our gold for what was sold
Without the least misgiving;
Those days and nights we'd see such sights
As now we dare not mention,
And what requites us now, ye knights
Who gather in convention?

Of course today, in measures gay,
We sing in merry chorus—
In glad array our coin we pay
And quaff what's set before us!
We join again, as we did then—
Before 'twas prohibition—
The music men who view the splen-
Did exposition.



And as we view the wonders through,
We marvel at the vision
Of what we knew we could not do
When "commerce" caused derision;
For 'tis not long since 'twas all wrong
To show your goods in meetin',
And all were strong with ax and tong
To stamp out all competin'!

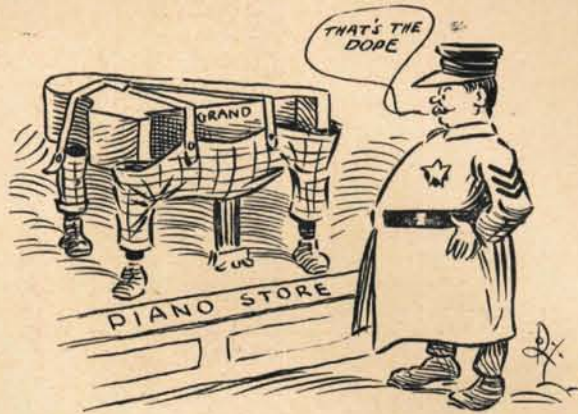
Ah, those were days of gleeful lays,
And nights of giddy going—
Of lights that blaze and morning's haze
When ice-cold draughts were flowing;
No moon on high in any sky
Again will bend so near us,
No street-lamps fly as we draw nigh,
No pavements try to queer us!



No more delight in bubbles bright
Will hiss and burst and glimmer,
While at the sight, ecstatic quite,
Our cares grow dim and dimmer;
Old friends we'd greet, all mellow, sweet,
As if returned from danger,
While time flew fleet till, filled complete,
We knew no foe nor stranger.

Too sweet to last, the fine old past—
So steeped in joy's full measure—
We're left aghast, it sped so fast,
With all its fleeting pleasure;
But ne'er despair, for sea and air
May still be filled with wonders,

And everywhere, they do declare,
Are freaks in nature's blunders.



We still have gin-ger ale to win
Our parching souls from dying,
And we may sin by giving in
To beer that's "near" us "lying";
Our eyes at least may freely feast
On sights that make us giddy,
And, though they've ceased to swell like yeast,
Our heads may still be liddy.

So, brothers, sing! still in the ring
Is Janssen's ready rhyming,
Some cheer to bring with lingering
Remembrance in its chiming;
And Parsons, too, is not yet through,
His wit is still compelling,
While, ever new, some others, too,
May help in gloom-dispelling.

So when again the week shall wane,
The Show all over, ended,
There'll not remain a blot or stain
In all our pleasures blended;
And what we missed from out the list
Whose going might be sadder,
We may insist fair Fortune's kissed
To make atonement gladder.



ASKS \$30,000 DAMAGES.

Nathan Goldstein, Patchogue, L. I., has instituted an action for \$30,000 damages against the Wurlitzer Organ Company, of Manhattan. The action is the result of a fire in July last, which almost totally destroyed the Unique Theater, on Ocean avenue, owned by Mr. Goldstein. The plaintiff alleges that certain defects in the installation of electrical equipment on an organ placed in the theater by the defendant corporation resulted in the destruction of his theater by fire.

WILL ADD SMALL GOODS.

The Frank H. Brown & Co., Logansport, Ind., has moved into bigger and better quarters in the Stettiner Building. Special equipment for the demonstration of player-pianos has been provided. The company is preparing to add a line of small music goods to its fine line of pianos, players and phonographs.

HAWAIIAN MUSIC.

About fifty years ago the Portuguese musical instruments began to be popular in Hawaii, the ukulele being a development of the Portuguese fiddle. But although the Hawaiian instruments were thus modernized, the rhythmic, melodic spirit of the native music remained much the same as in the past. Hawaiian music may be roughly divided into the traditional "royal" songs, religious melodies, love songs, and the various hulas or dance tunes.

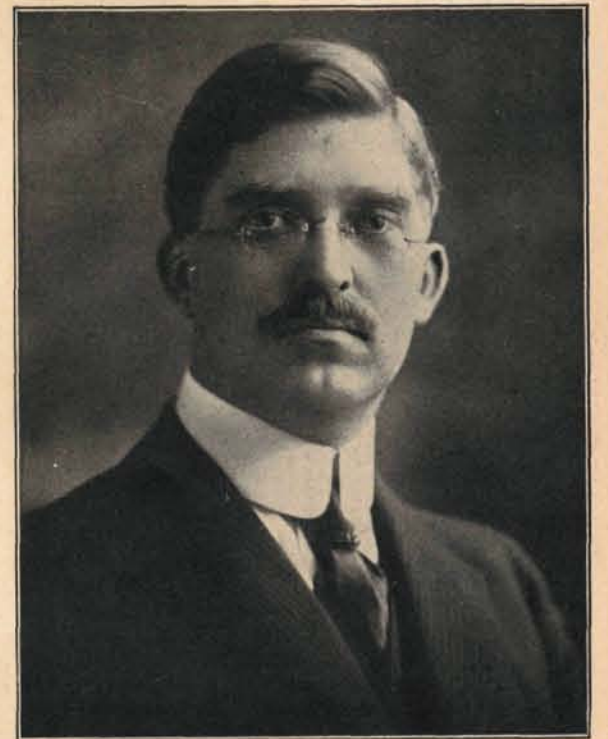
Retail Division of Straube Piano Co. Purchases Straube Building, Hammond, Ind., In Which Its Store Has Been Located for Years.

The most important deal that has been made in the Hammond, Indiana, business property in years was the sale of the Straube building to Charles H. J. Thorby in trust for the Straube Piano & Music Co. The consideration as evidenced by the revenue stamps on the deed was \$75,000.

The property sold is a two story brick and terra cotta building with a frontage of 100 feet on South Hohman street. There are four stores and six office suites in the building bringing in a gross rental of approximately \$9,000 a year.

Make Far-Sighted Move.

The Straube Piano & Music Co. is the principal tenant in the building. The significant thing about the transaction is the fact that although the purchaser was fortified with a lease that had several years to run, the tremendous increase in rentals and the expanding needs of the purchaser made the acquisition of the property at this time a matter



E. R. JACOBSON.

of broad foresightedness. The Straube Piano & Music Co. is the retail division of the Straube Piano Co.

Straube's Growing Industry.

But this deal also attracts attention to the sturdy and almost unparalleled growth of the Straube Piano Co. the manufacturing division which has its plant and general offices on Manilla Ave., in Hammond.

This industry has an estimated 1920 output of 20 pianos a day or about 6,000 a year. More than 50 skilled mechanics are employed and the business is growing by leaps and bounds. An \$80,000 addition was made to the plant last year and other extensions are contemplated for the coming year.

With the spirit of progressiveness that characterizes the Straube organization, arrangements were made in 1919 to build the Straube player action, all of the other parts of the piano being made complete in the Hammond factory.

Bright Outlook for Future.

The Straube Piano Co. manufactures in the neighborhood of a dozen types and styles of pianos and the contribution of this industry to the diversity of Hammond's manufacturing enterprises may be appreciated by the fact that in the dull and depressing years of 1915 and 1916 the plant operated to its full capacity affording steady employment to its men.

The officers of the Straube Piano Co. are E. R. Jacobson, president; Jas. F. Jacobson, secretary; C. H. J. Thorby, treasurer; A. T. Schuldes, auditor and W. G. Betz, superintendent. These men are enthusiastic in their work, and the extension of the plant and now the acquisition of the Straube building are the outward evidences of the remarkable success of their enterprise.